

#### **Natalie BERAN**

Natalie is an actor, voiceover artist, assistant director (TV/Film), theatre producer and radio announcer/producer. She is a drama graduate of the American Musical and Dramatic Academy (New York) and holds a Bachelor of Communication Studies (Radio).

She was a finalist in the inaugural SOVAS Voice Arts Awards and a recipient of the Shakespeare's Globe International Actors' Fellowship. She has worked in TV and theatre production for many years including producing the Auckland Outdoor Summer Shakespeare, program manager for The Actors Program and is a founding member of the International Actors Ensemble.

Natalie is a current Equity board member.



#### **Courtney EGGLETON**

Courtney has over two decades of theatre experience in New Zealand, predominantly in Auckland. She is both an Actor and Producer creating work independently and as part of NAVI, a Taāmaki based creative collaborative.

Her recent actor credits include theatre shows Precious Little (NAVI), (on) Whatipu (NAVI), Manless (Luftmensch) and Everything Between Us (Independent). Her screen credits include Shortland Street (TVNZ), Alice? (Ayala Productions) and Revenge (Melopy Films). She is also currently producing NAVI's short fantasy film Waters Fall in collaboration with Melopy Films.

Courtney is incredibly passionate about performer's rights and ensuring an equitable environment for New Zealand creatives.



#### **Marianne INFANTE**

Born in Pampanga (Philippines) raised in Christchurch (Aotearoa), Marianne is an interdisciplinary Kapampangan creative artist and actor in theatre and film. In 2016 she graduated with a Bachelor in Performing Arts majoring in Screen and Theatre Acting from UNITEC. Marianne then joined forces with Proudly Asian Theatre as the company's executive producer. Later, Marianne emerged as a fresh playwright producing Aotearoa's first and award-winning Filipino theatre production called 'PINAY', proving her to be a game changer in NZ's artistic landscape. Infante continues to empower and authentically represent Pan-Asian voices and support the growth of Asian storytellers in film and theatre.



#### **Clare MARCIE**

Kia ora!  
I'm an actor, writer, audio describer and mentor. I care deeply about the mental health and wellbeing of my fellow actors.

In 2014 I graduated from The Royal Conservatoire of Scotland with an Acting Masters. I also hold a B.A (Theatre & English Literature) from VUW. Credits include: When the Rain Stops Falling (Tron Theatre, Glasgow), The Main Yvette (Edinburgh Fringe & Rich Mix London), and Jangle (Bats Theatre).

My solo show What Would Kanye Do? Received development funding from Creative Scotland before debuting at Edinburgh Fringe where it was shortlisted for the Scottish Arts Club Theatre Award.



#### **Batanai MASHINGAIDZE**

Kia ora.  
I'm Batanai Mashingaidze, Batanai meaning the bringing together of people or the uniting of people. It's important to state that

because I believe it speaks to the environments and spaces I strive to seek out and work in. After Graduating from Toi Whakaari in 2016 I've worked as an actor across theatre and film with organizations like Barbarian and Mixit. I'm 24 years old. I advocate for the Black community here in Aotearoa, the Queer community and I'm passionate about making space for these voices to be heard. I'll be a voice for emerging artists on the board.

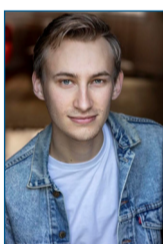


#### **Miriama MCDOWELL**

Tēnā koutou kātoa. I have been an actor for 18 years. I work in theatre, tv and film. I also teach, mentor emerging artists, and work in our industry as an intimacy

coordinator. I am passionate about diversity on our stages and our screens and I believe that our best asset as actors is our community.

I advocate for improving working conditions for mothers, and I advocate for tāngata whenua. I want an industry where we can have sustainable careers, and this starts with creating pathways for our emerging artists.



#### **Josh METCALFE**

I, Josh Metcalfe, graduated Unitec's School of Performing and Screen Arts in 2017.

I am a passionate entertainer and writer with a unique, comedic flare. I have appeared in Basement theatre shows 'Fleshies' and 'Animal' and TVNZ comedy improv webseries Educators season 2.

If elected, I will be an accessible and relatable board member for young and upcoming actors who are emerging into the industry. I want to get actors of my generation more involved and aware of the benefits of equity and I want to gain a better understanding, of our performers rights, so I can educate others.



#### **Mustaq MISSOURI**

My main motivation behind seeking this role lies in my desire to give back to the acting community. Since arriving in Aotearoa in 2014, I have been privileged to have

been part of this industry, both on stage and screen.

I believe that my experience in my previous home bases, Singapore, Australia and Shanghai, gives me a unique outlook on certain issues. In particular, matters relating to race, diversity and representation in the industry. The changing landscape of the industry here should be, I feel, reflected in the make up of the board.

Thank you for your consideration.

Mustaq Missouri.



#### **Cherie MOORE**

Cherie is an actor, singer, director and vocal coach. She is a current board member of Equity NZ, and would love the opportunity to keep serving the community in this way.

Cherie is the Head of Voice at The Actors' Program, a founding member of Last Tapes Theatre Company and the Artistic Director and founder of Ihi Musical Theatre Company.

Cherie has toured work through NZ and internationally, and has won awards for performance and direction. She is passionate about mentoring up and coming performers, and about the arts being celebrated and valued in NZ.



#### **Rashmi PILAPITIYA**

As the first Sri Lankan woman to graduate from Toi Whakaari as an actor in 2003, my highlights include: The Court Theatre, ATC, Silo and Pop up Globe. For television:

Shortland Street, Harry, Jonah and Mean Mums. I spent nine years working as broadcast crew for TVNZ and Al Jazeera.

Most recently my role at Panuku Development involved capacity and capability building for community groups. As a woman of colour in my 40s it would be a privilege to utilise my work and life experience to add value to the Executive Board.



#### **Jeff SZUSTERMAN**

Jeff is a current Equity NZ board member with more than 10 years experience on the board. He has been instrumental in many of the positive changes that have

occurred for actors across this time, most notably negotiations on the recommended standard contract and the casting guidelines. He is seeking to increase membership engagement at a committee and board level, and greater diversity with the membership.

Jeff is standing for re-election to see these to fruition.